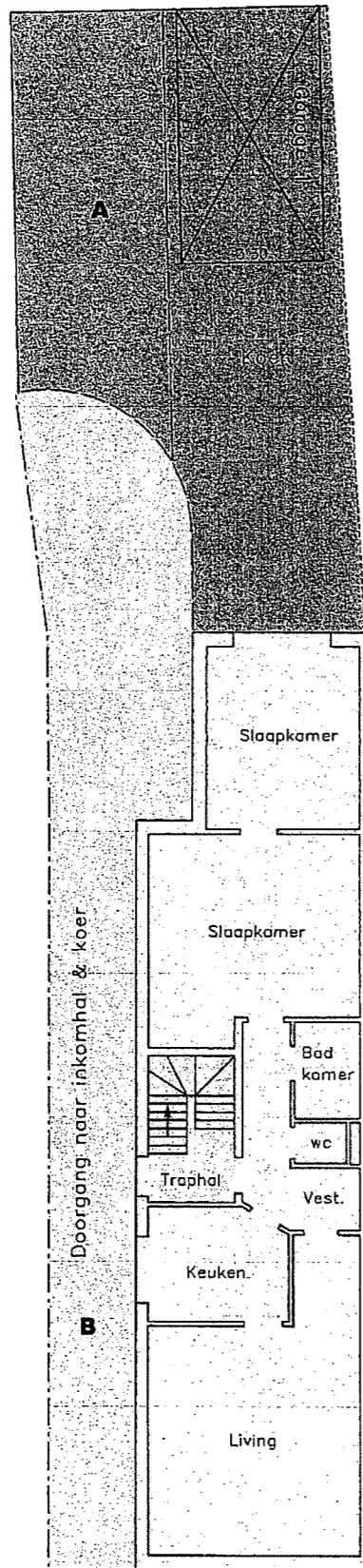




GELJKVLOERS

GEMEENTE KORTENBERG

LEUVENSESTEENWEG, 223



Verklaring

-  Privatieve delen
-  Gemene delen

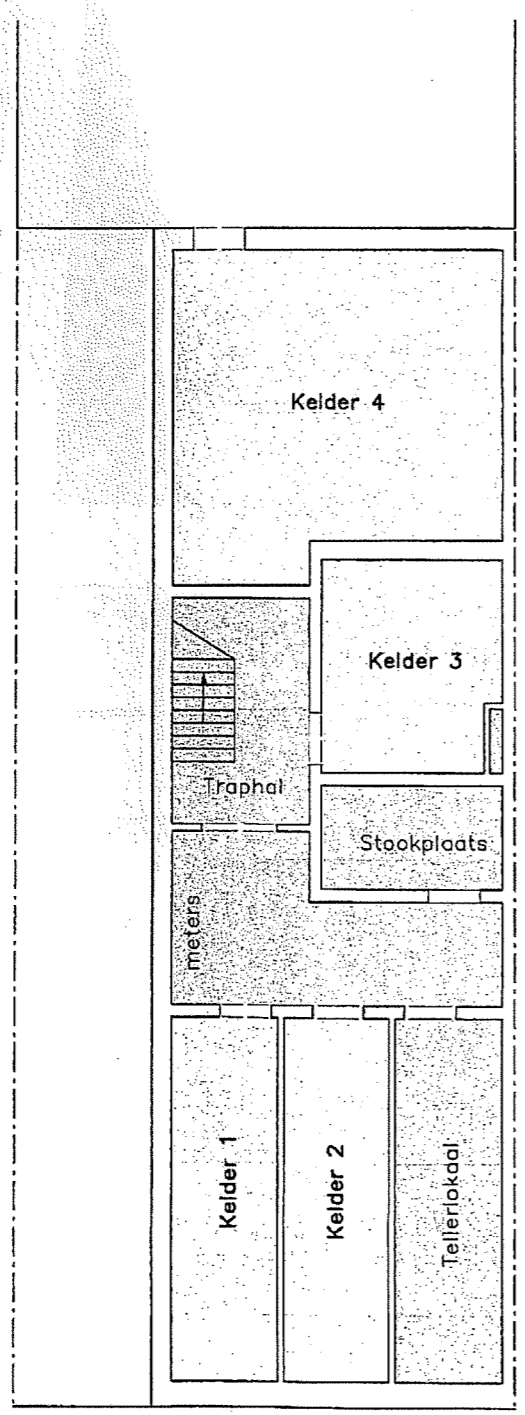
Appartement nr. 1



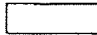

KELDER

GEMEENTE KORTENBERG

LEUVENSEBAAN



Verklaring

-  Privatieve delen
-  Gemene delen

Straat

Schaal : 1/100

Grafische uitwerking volgens arch.-plan.